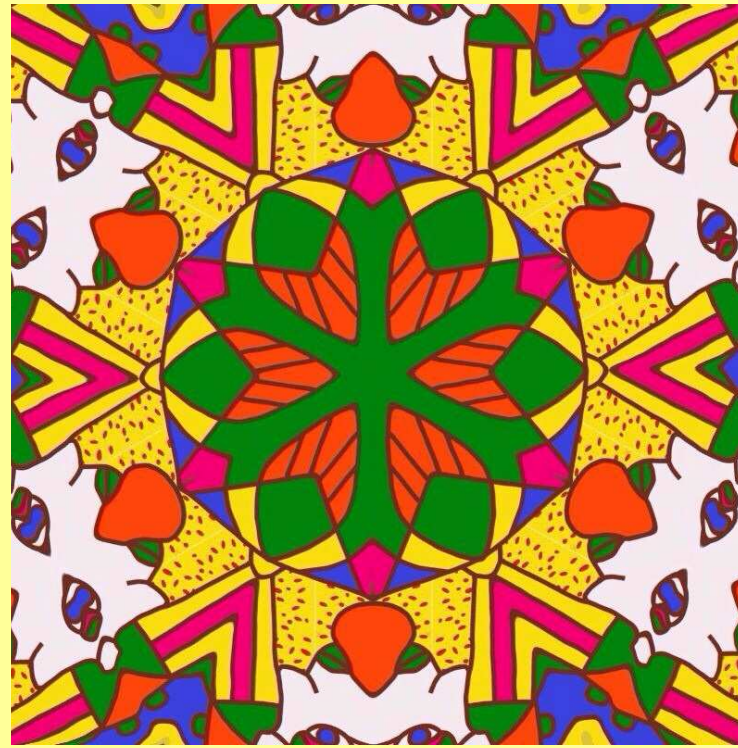
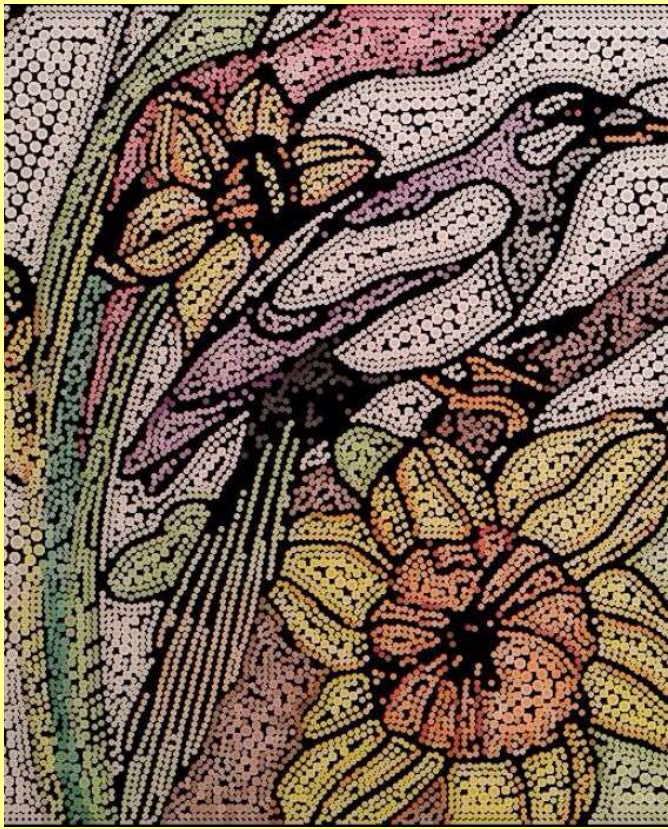






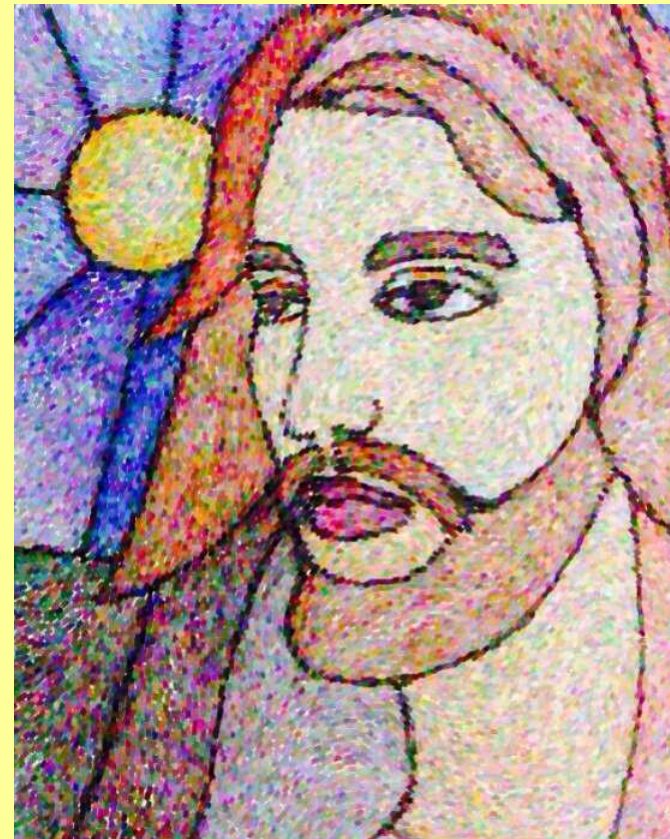
2015
Tiffany
with
P. Tosi

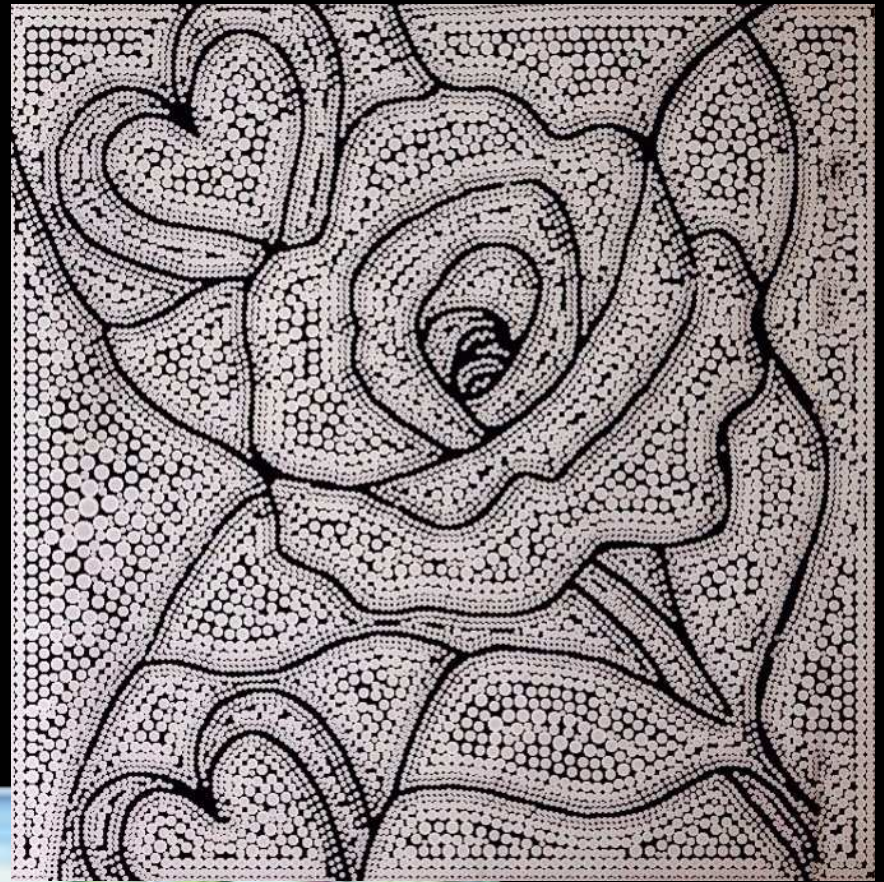
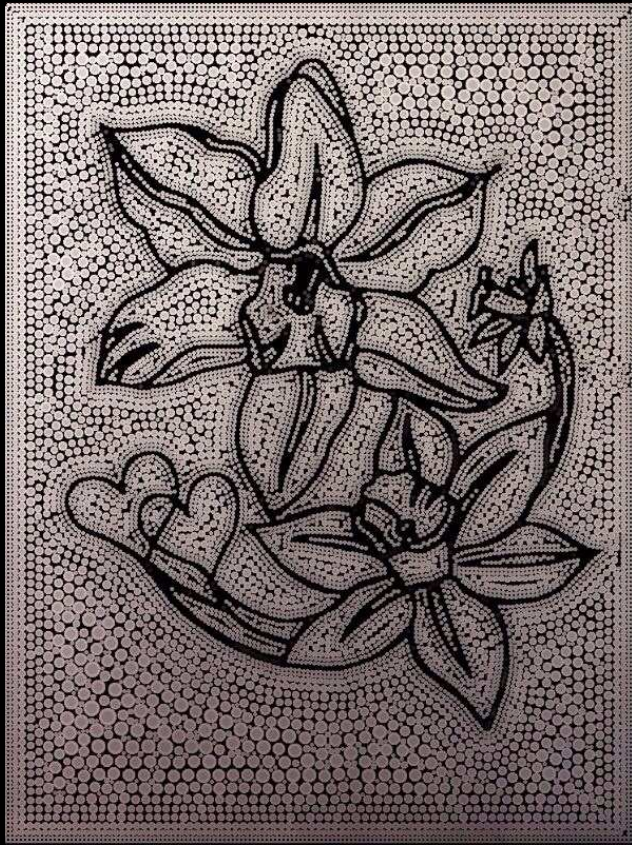
11.10.2014

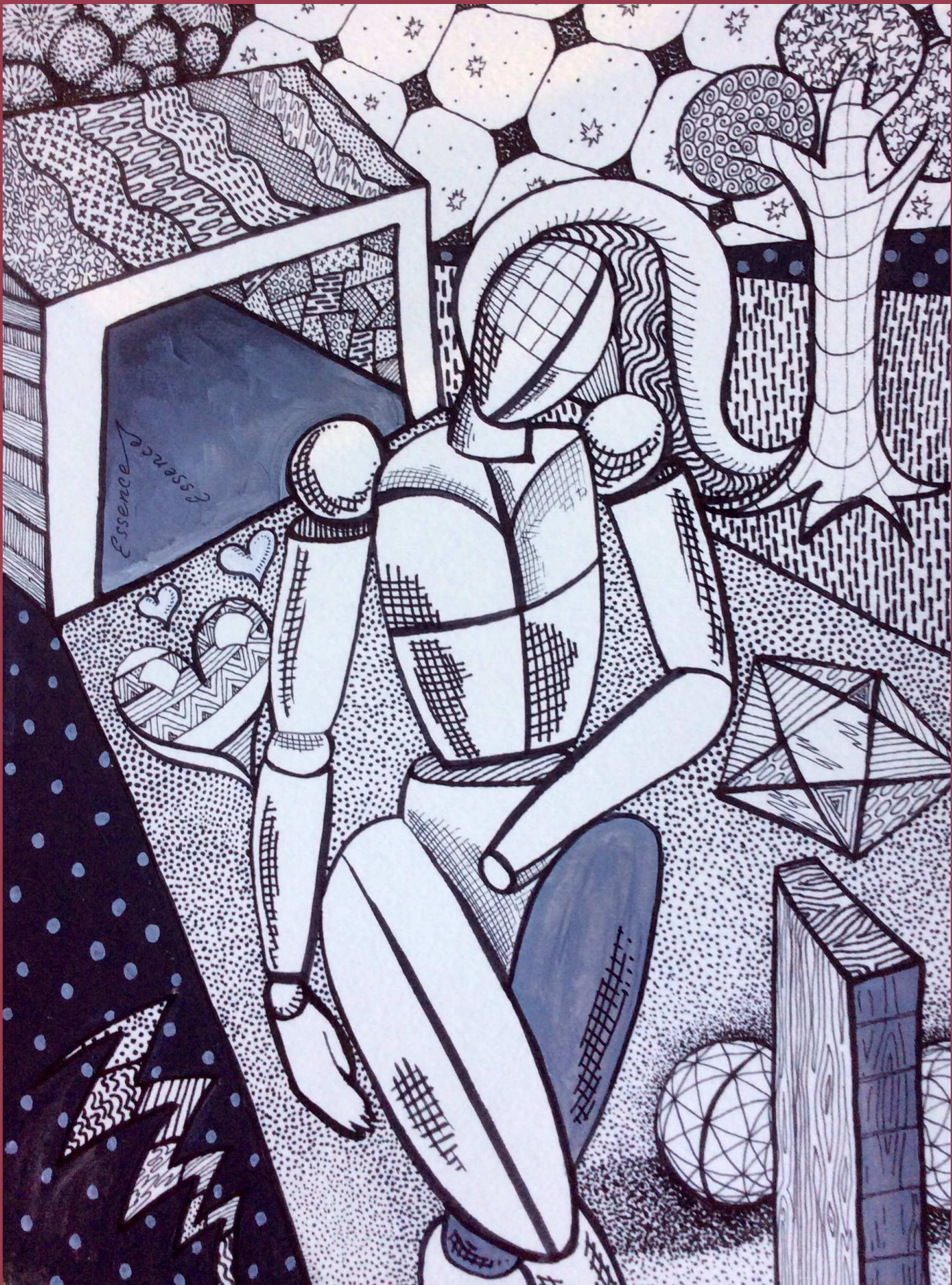


2

2015
Digital
Sketches



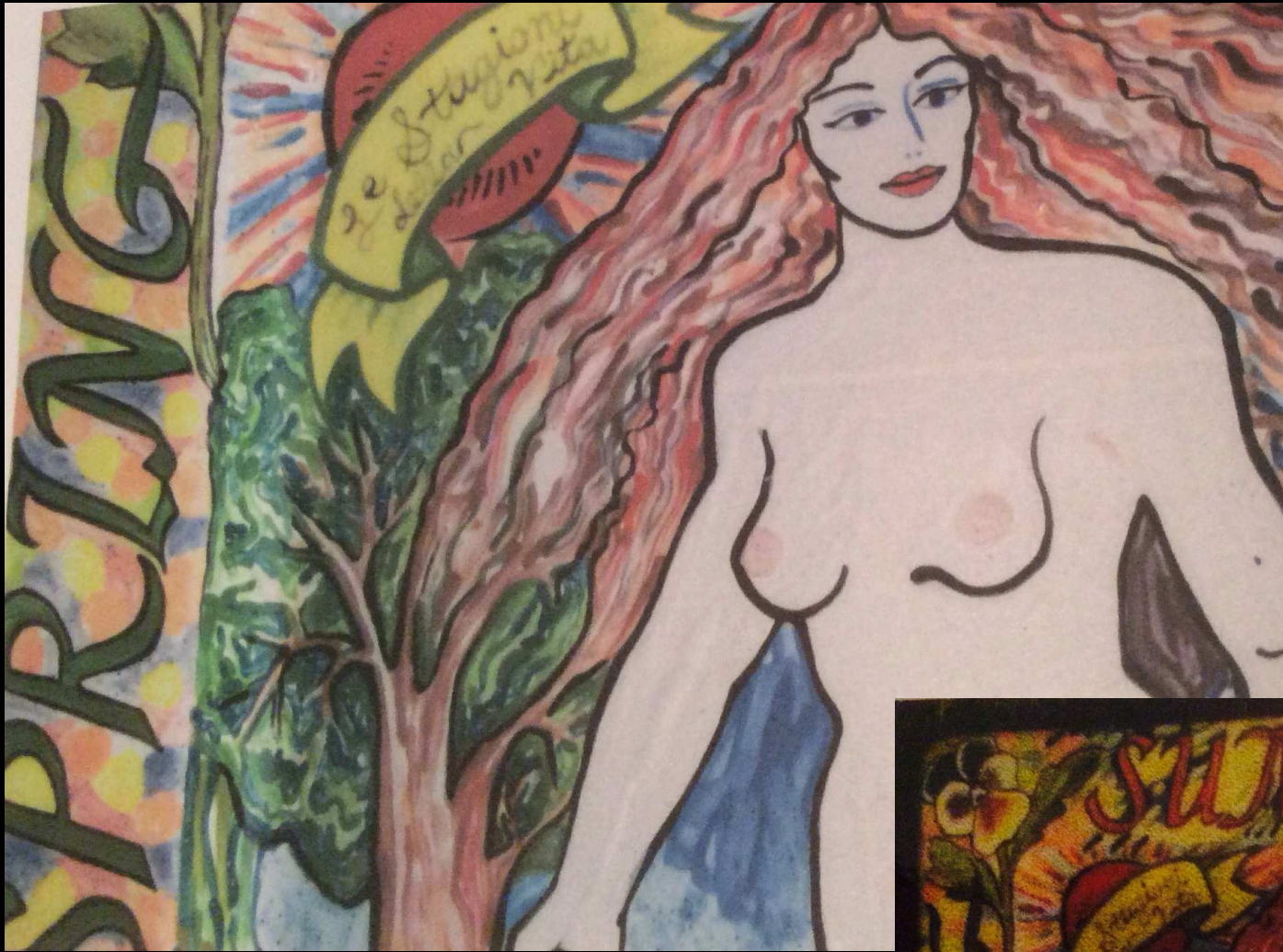




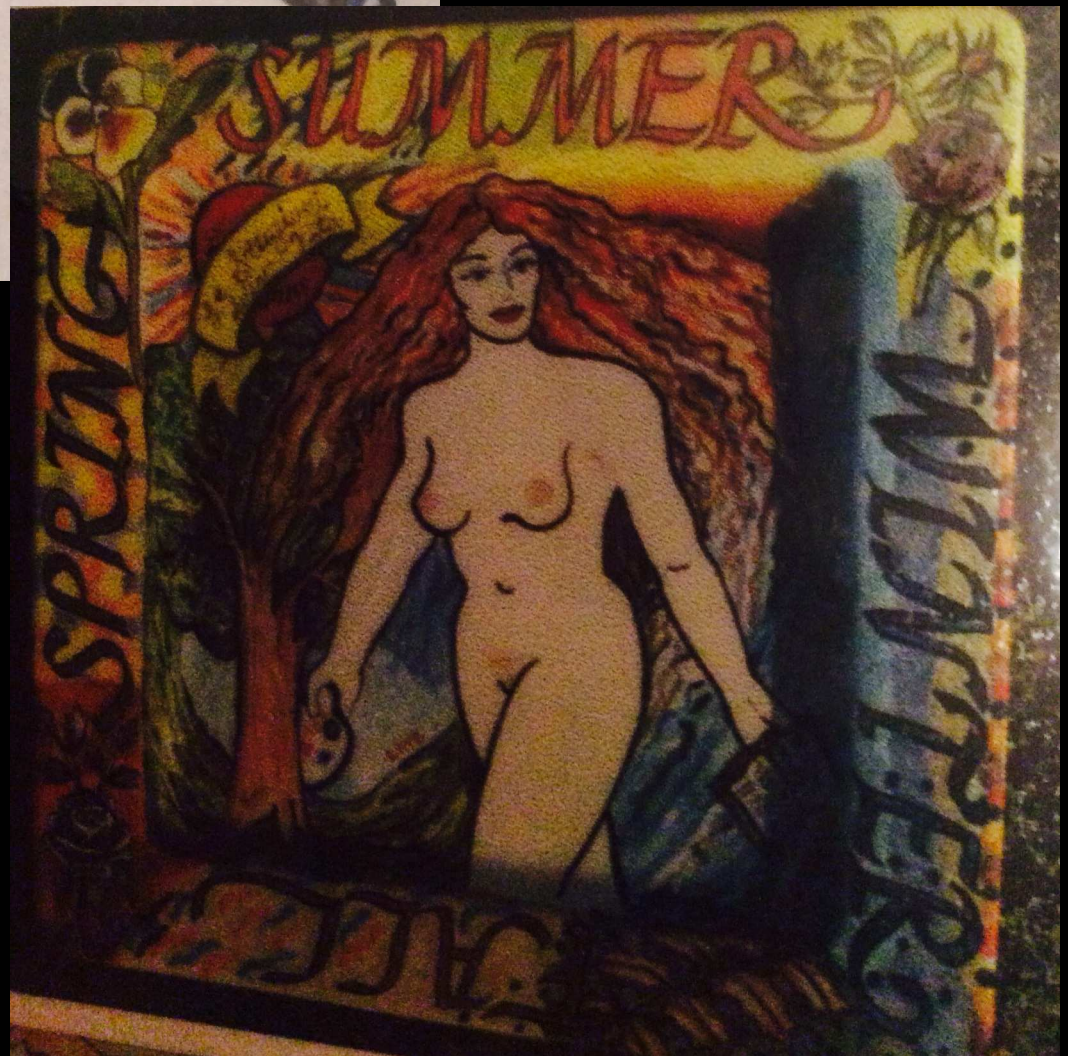
c. 2013
Ink

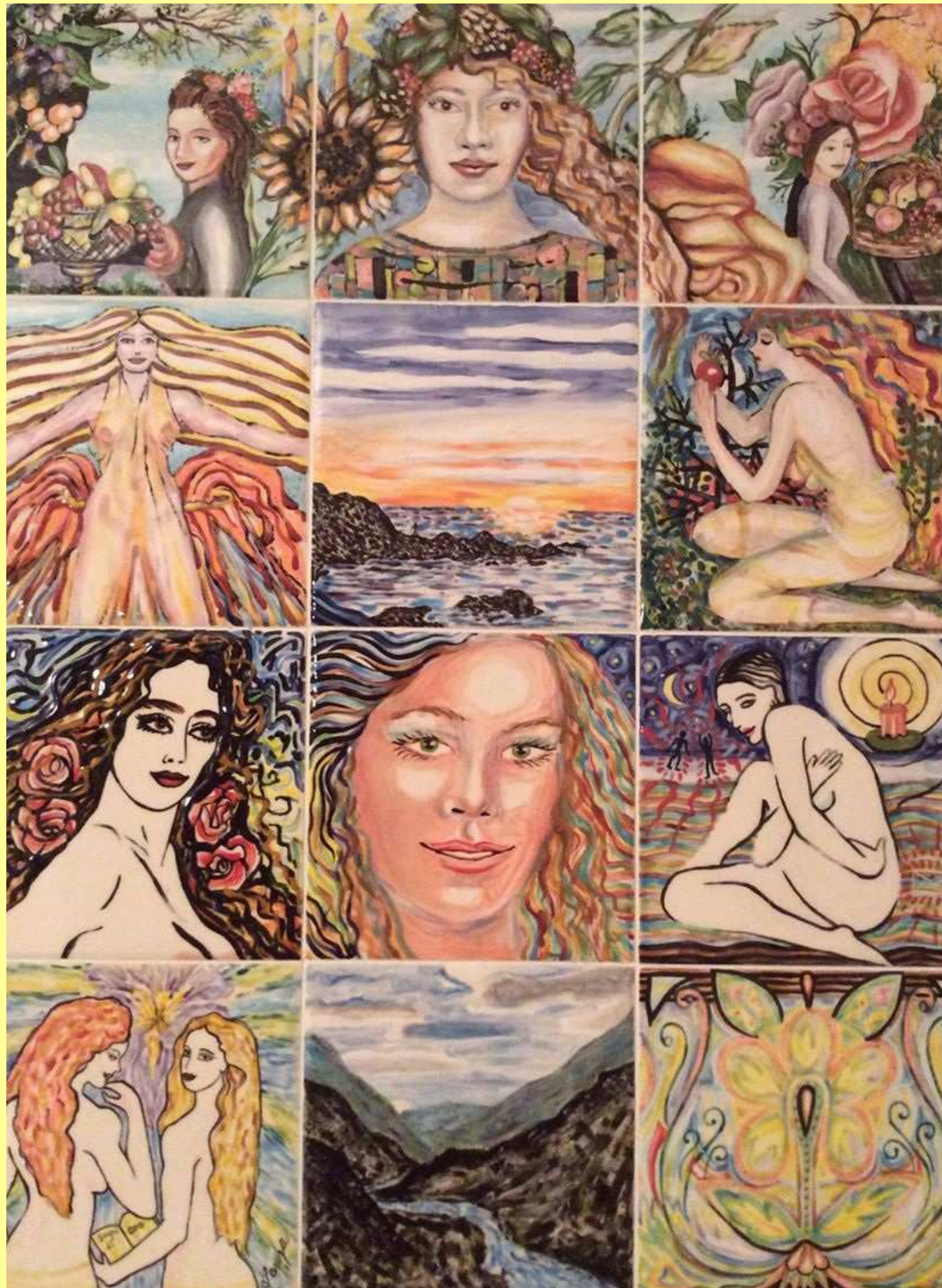


c. 2013
Ink



2003
Ceramic

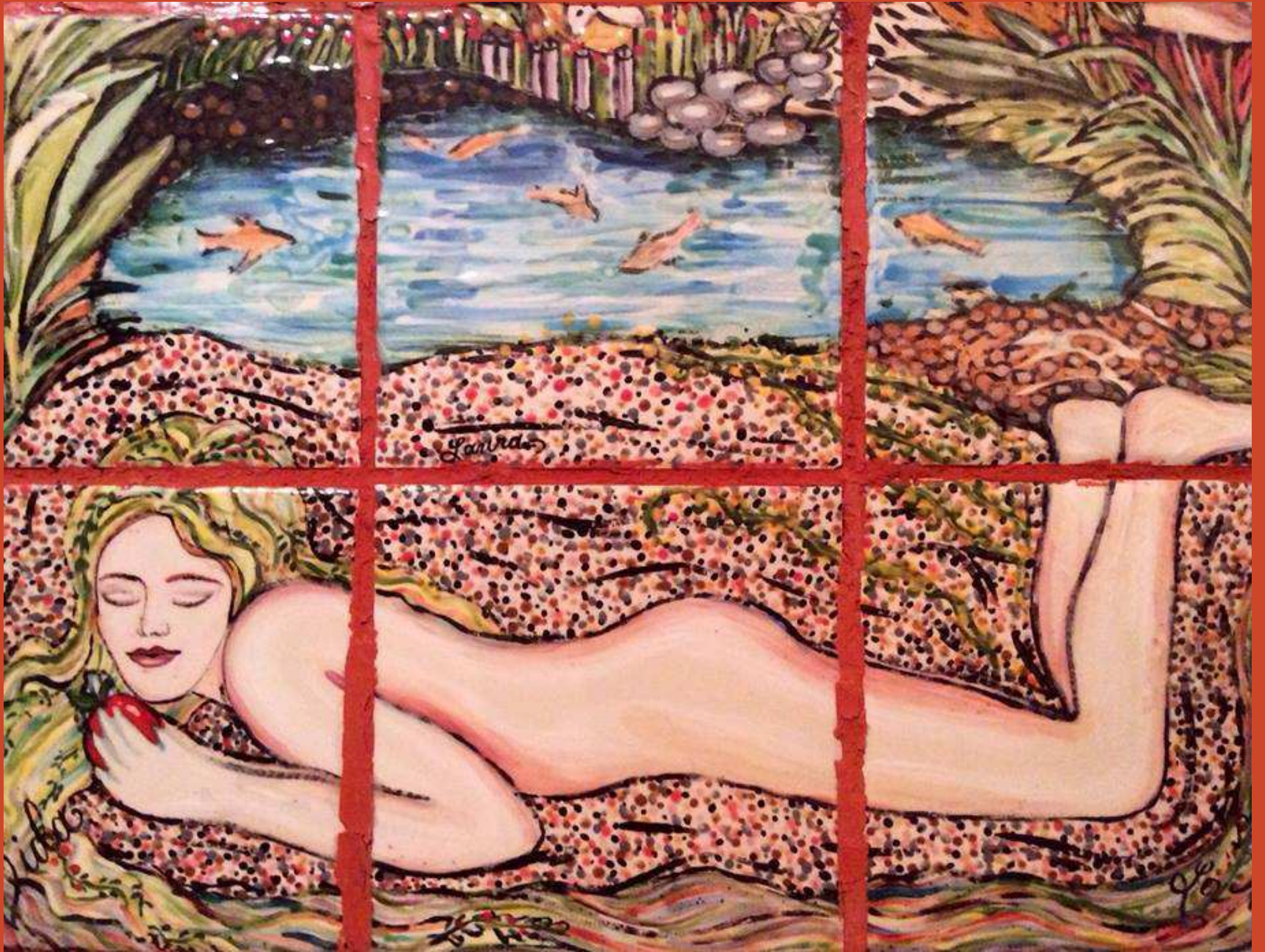




c. 2005
Ceramic



c. 2005
Ceramic





c. 2006

Ink



2015
Ceramic



c. 2005
Ceramic



2015
Ceramic



c. 1980
Oil Paint



2014 Ceramic



1985





2003
Ink



c. 2005
Ceramic
Photo
2015

The Canticle of the Creatures

Most high omnipotent good Lord,
to Thee praise, glory, honour,
and every benediction.

To Thee alone Most High do they belong.

And no man is worthy to pronounce Thy Name.

Praise be to Thee my Lord with all Thy creatures.

Especially for Master Brother Sun

Who illuminates the day for us,

And Thee Most High he manifests.

Praise be to Thee my Lord

for Sister Moon and for the stars.

In Heaven Thou hast formed them,
shining, precious, fair.

Praise be to Thee my Lord for Brother Wind,

for air and clouds,

clear sky and all the weathers

Through which Thou sustainest all Thy creatures.

Praise be to Thee my Lord for Sister Water.

She is useful and humble, precious and pure.

Praise be to Thee my Lord for Brother Fire,

Through him our night Thou dost enlighten,

And he is fair and merry, boisterous and strong.

Praise be to Thee my Lord for our sister Mother Earth,

Who nourishes and sustains us all,

Bringing forth diverse fruits,

and many coloured flowers and herbs.

Praise be to Thee my Lord for those,

who pardon grant for love of Thee

And bear infirmity and tribulation,

Blessed be those who live in peace,

For by Thee Most High they shall be crowned.

Praise be to Thee my Lord

for our Sister Bodily Death

From whom no living man can flee;

Woe to them who die in mortal sin

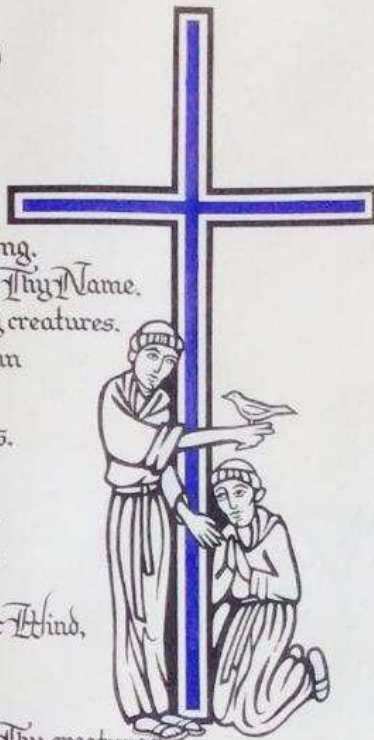
But blessed they who shall be found

in Thy most holy Will;

To them the second death can do no harm.

bles and praise my Lord all creatures,

And thank and serve Him in deep humility.



**Saint
Francis**



2014 Ceramic



2003
Ceramic



2003 Ceramic



Collaboration with P. Tosi

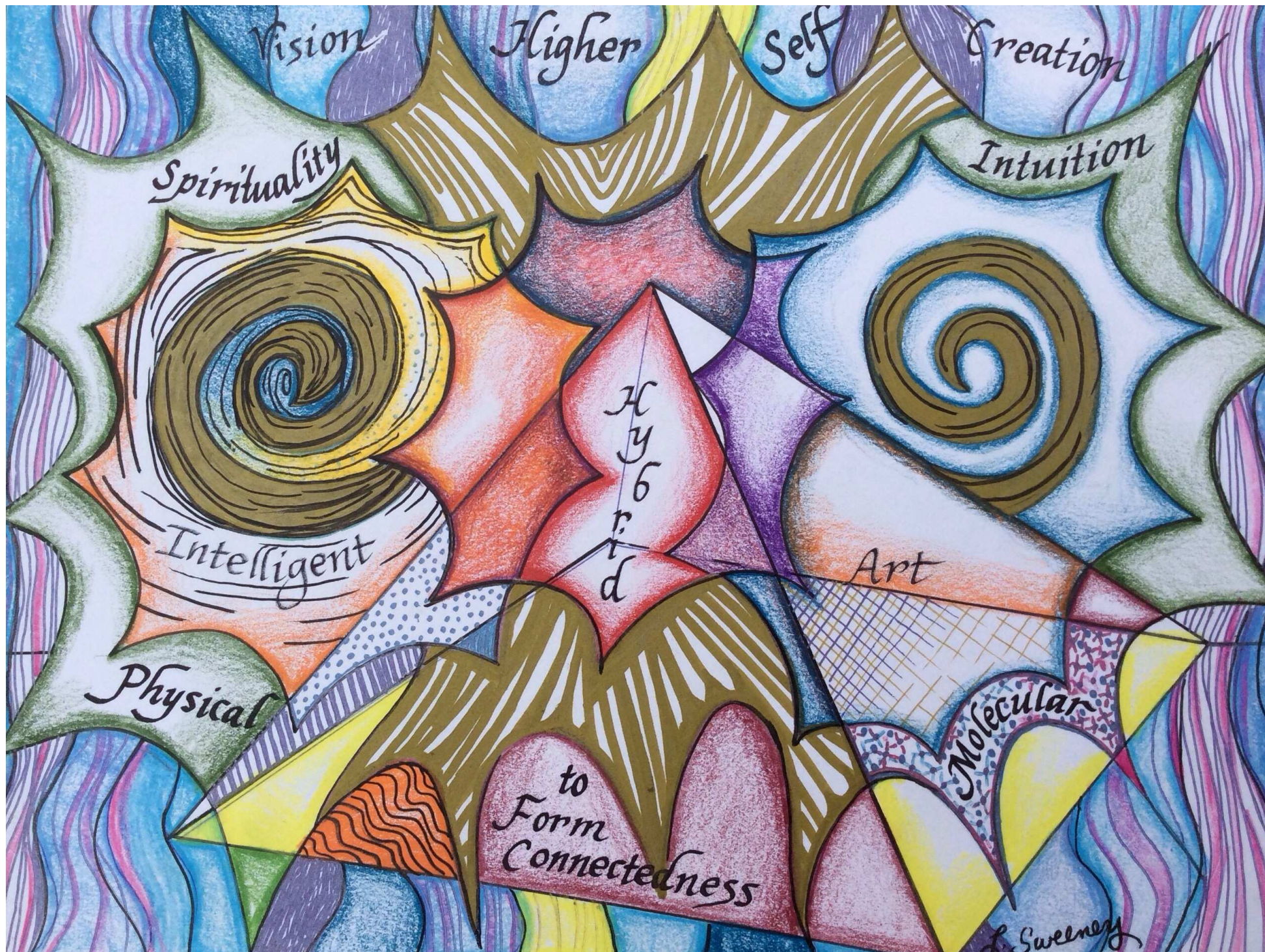


Tiffany Glass with P. Tosi



26

2003
Ink



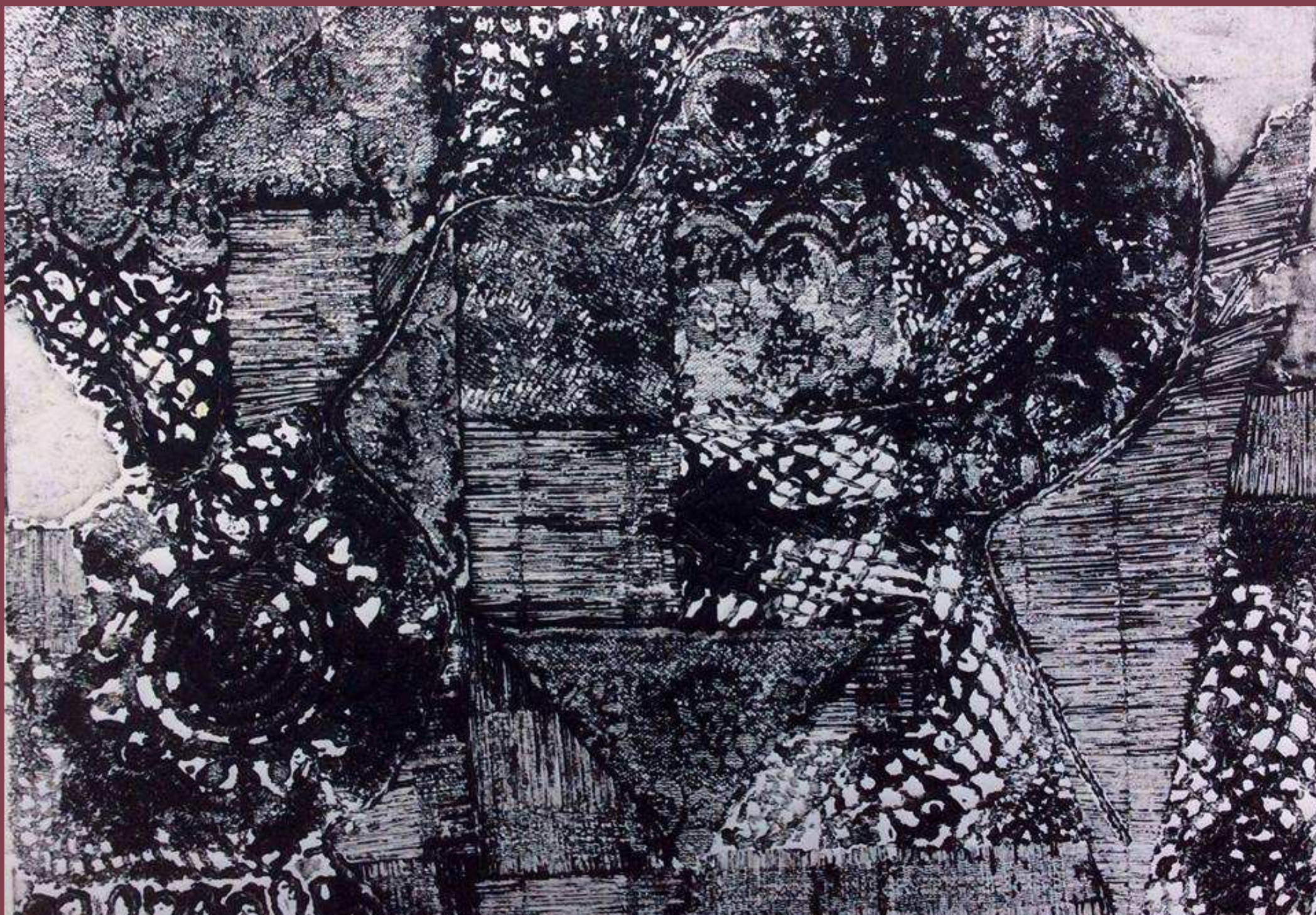
c. 2005 Mixed Media



1990
Mixed Media



2014
Ceramic



1990 Mixed Media Print



2005
Ink

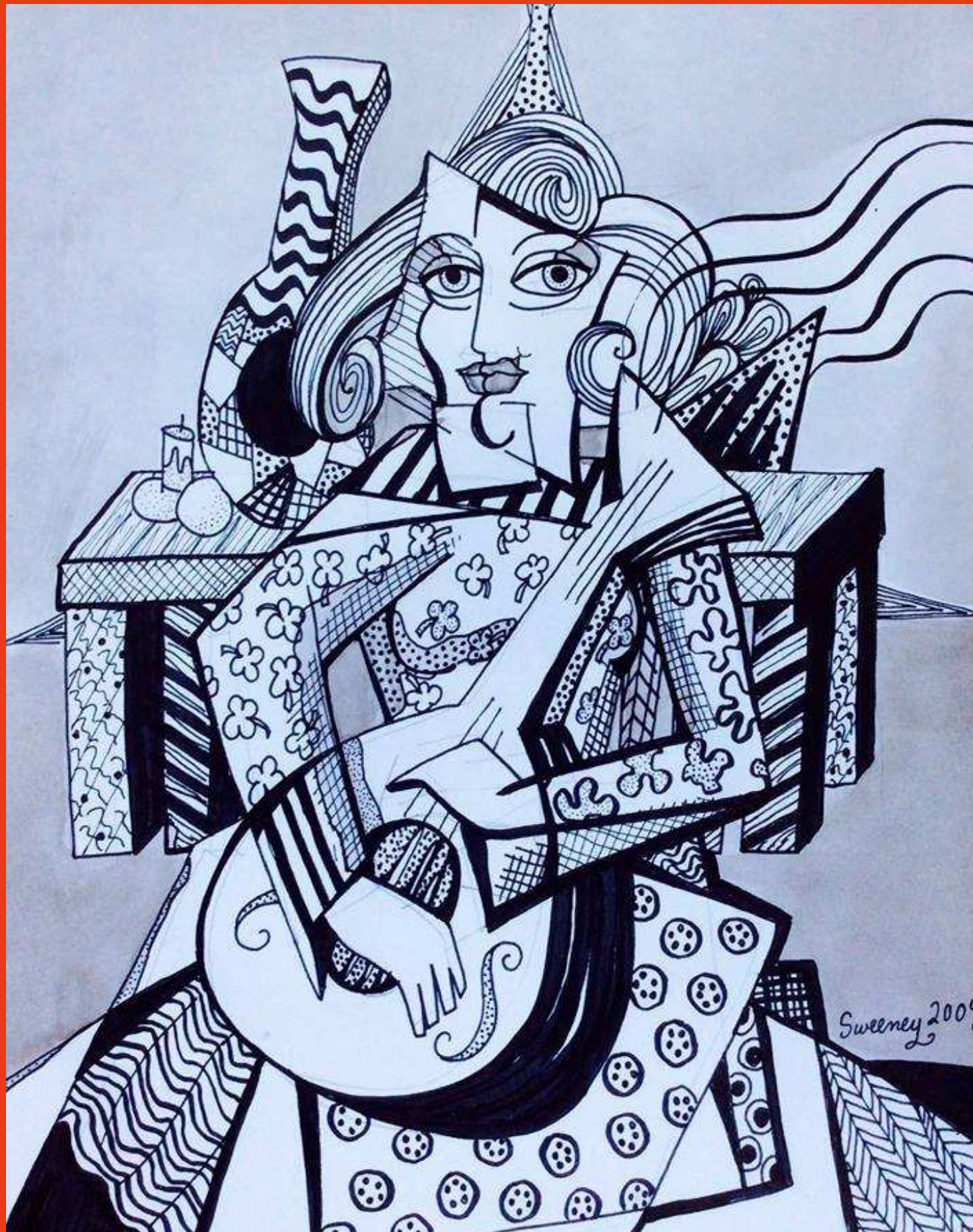


1977
Acrylic



1977
Acrylic

c. 2009
Ink

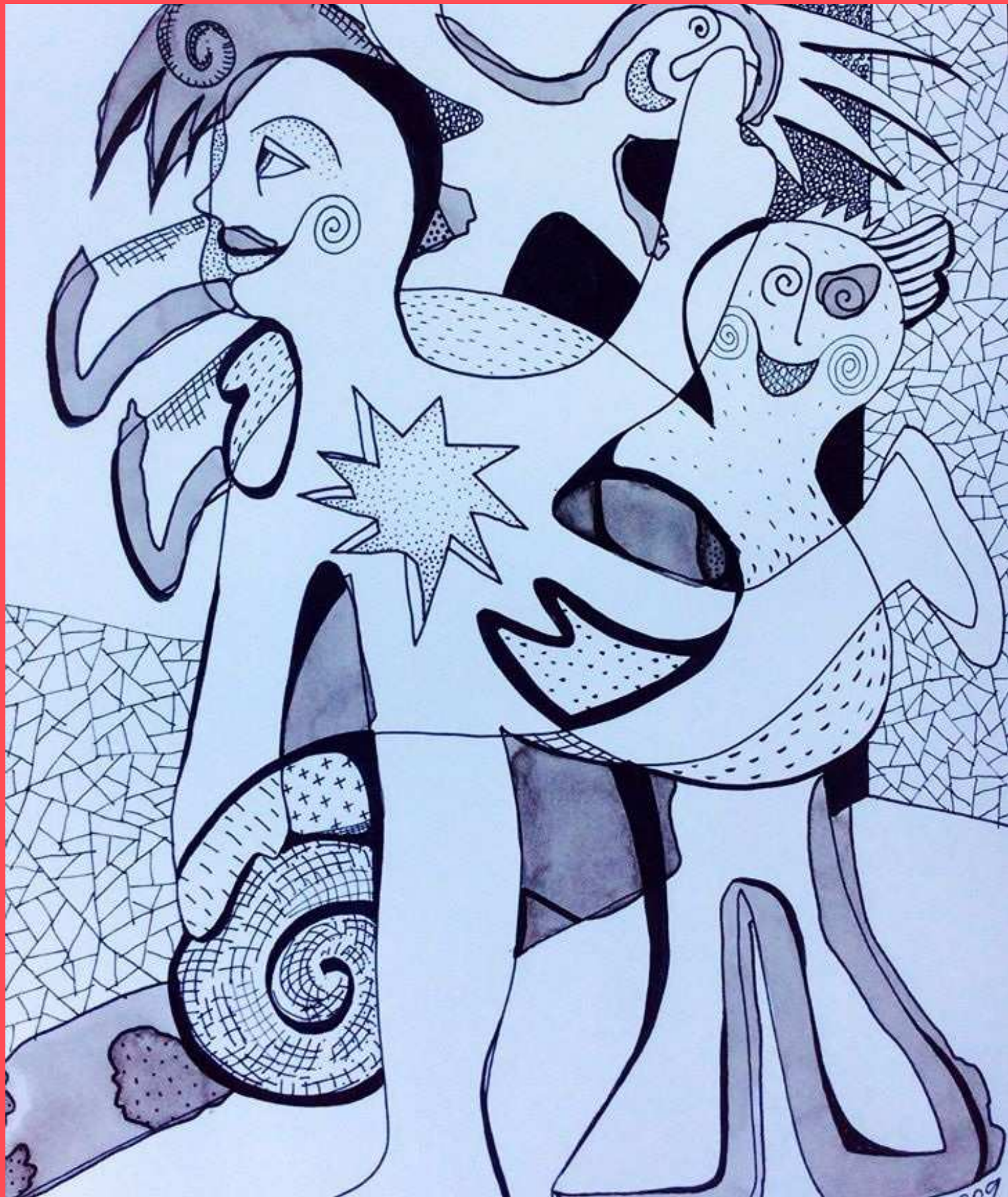




c. 2009
Ink



1990
Mixed
Media

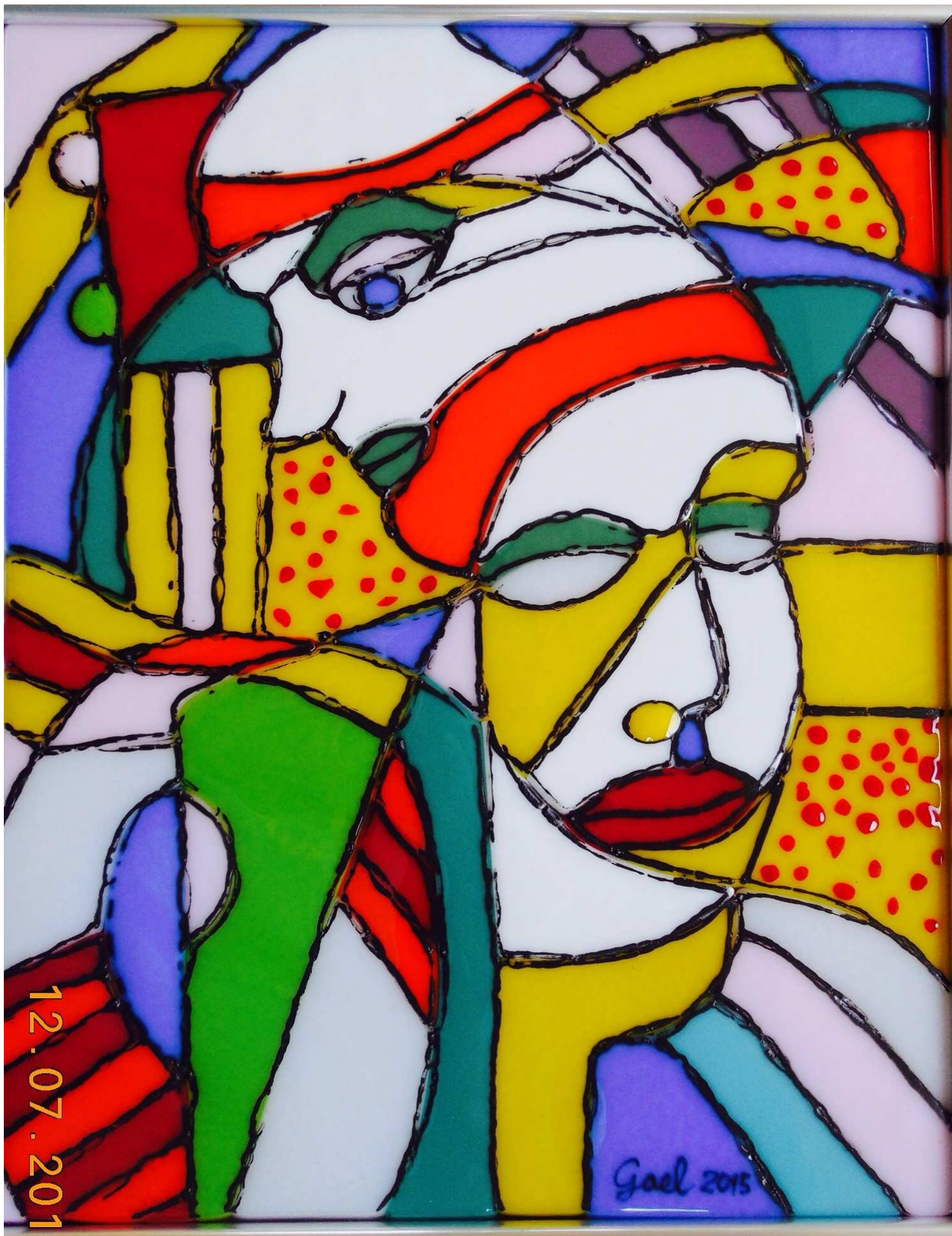


c. 2009
Ink



c. 2008
Ceramic





Fused
Glass
2015
with
P. Tosi

12.07.2011

Gael 2015



c. 2009
Ink



Laura
Sweeney
in
Digital
Collage



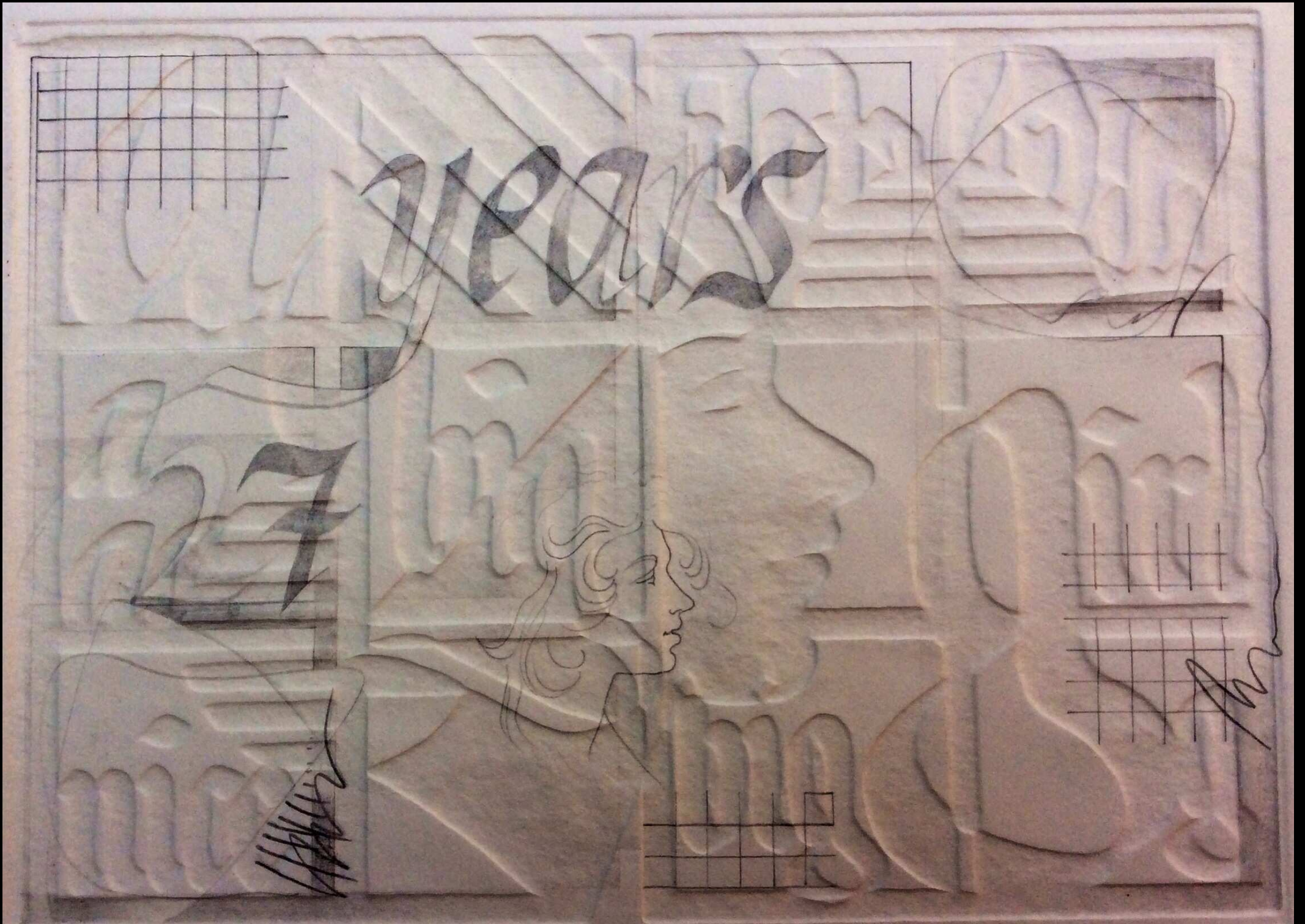
2005 Ceramic Painting



2003
Ceramic



c. 2007
Ink

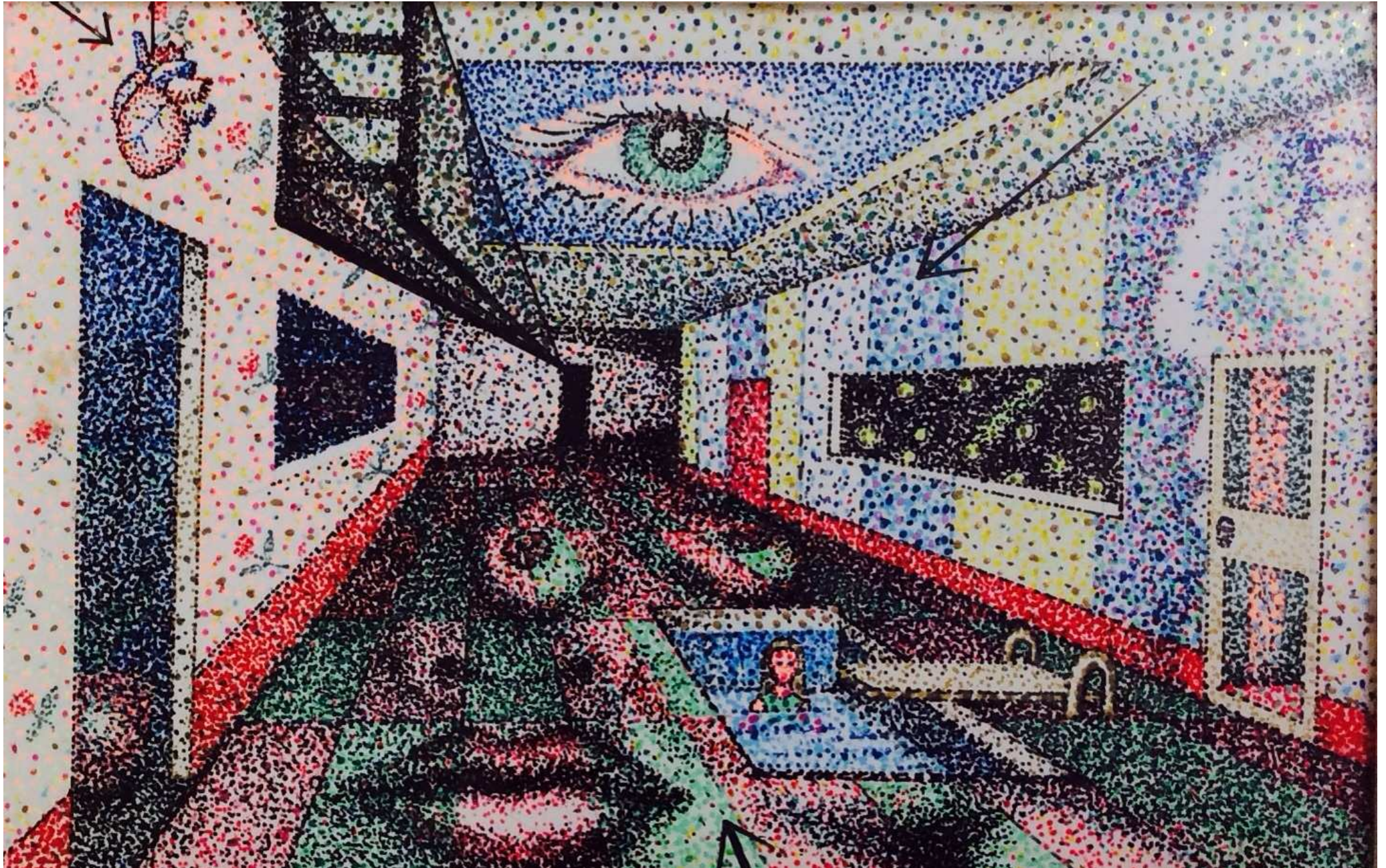


1990

Mixed Media and Pressed Paper



c. 2008
Glass Mosaic



c. 2003 Ink



c. 2010 Glass Mosaic on Wood

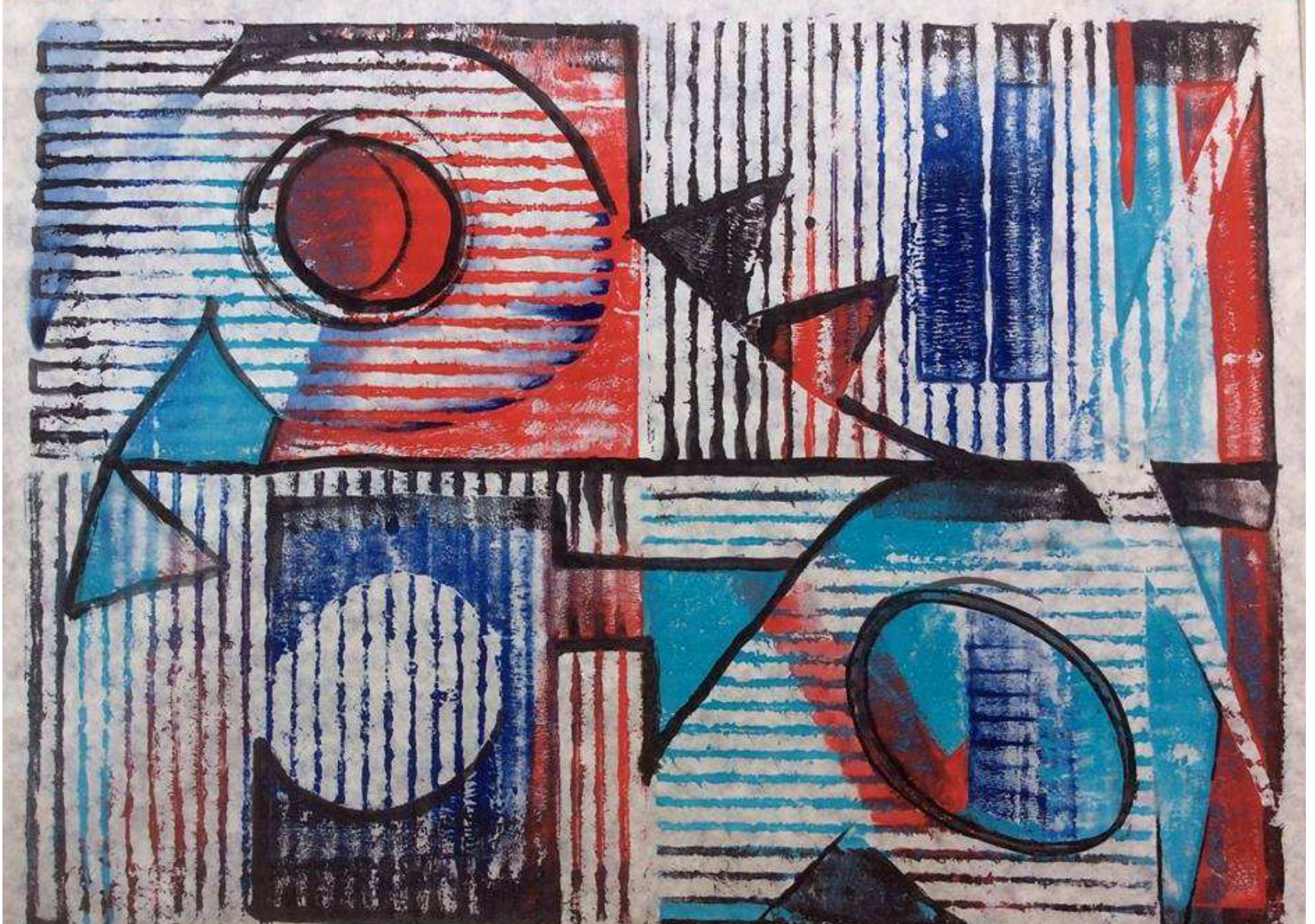
1990
Mixed Media







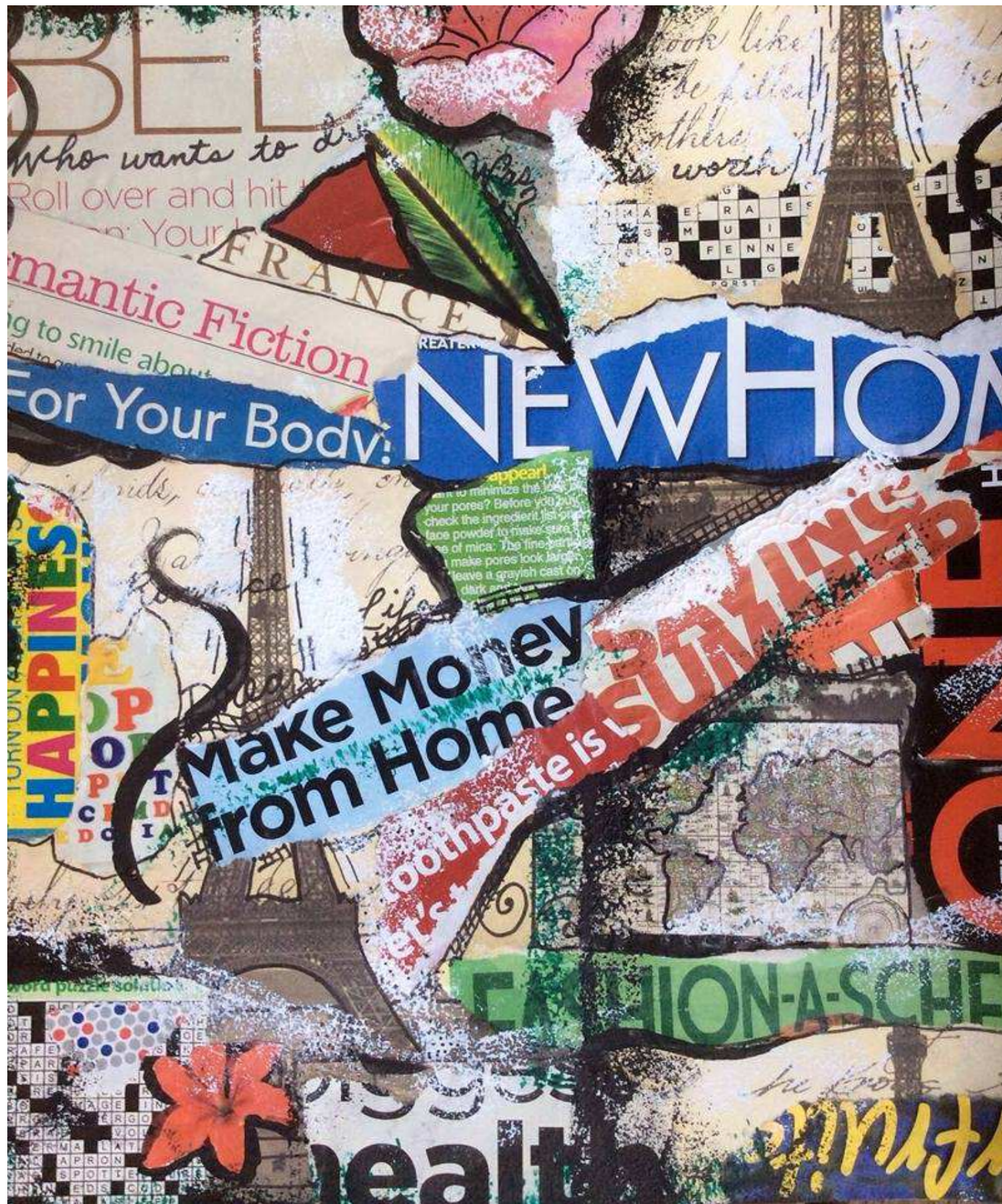
1978
Collage



1990 Mixed Media

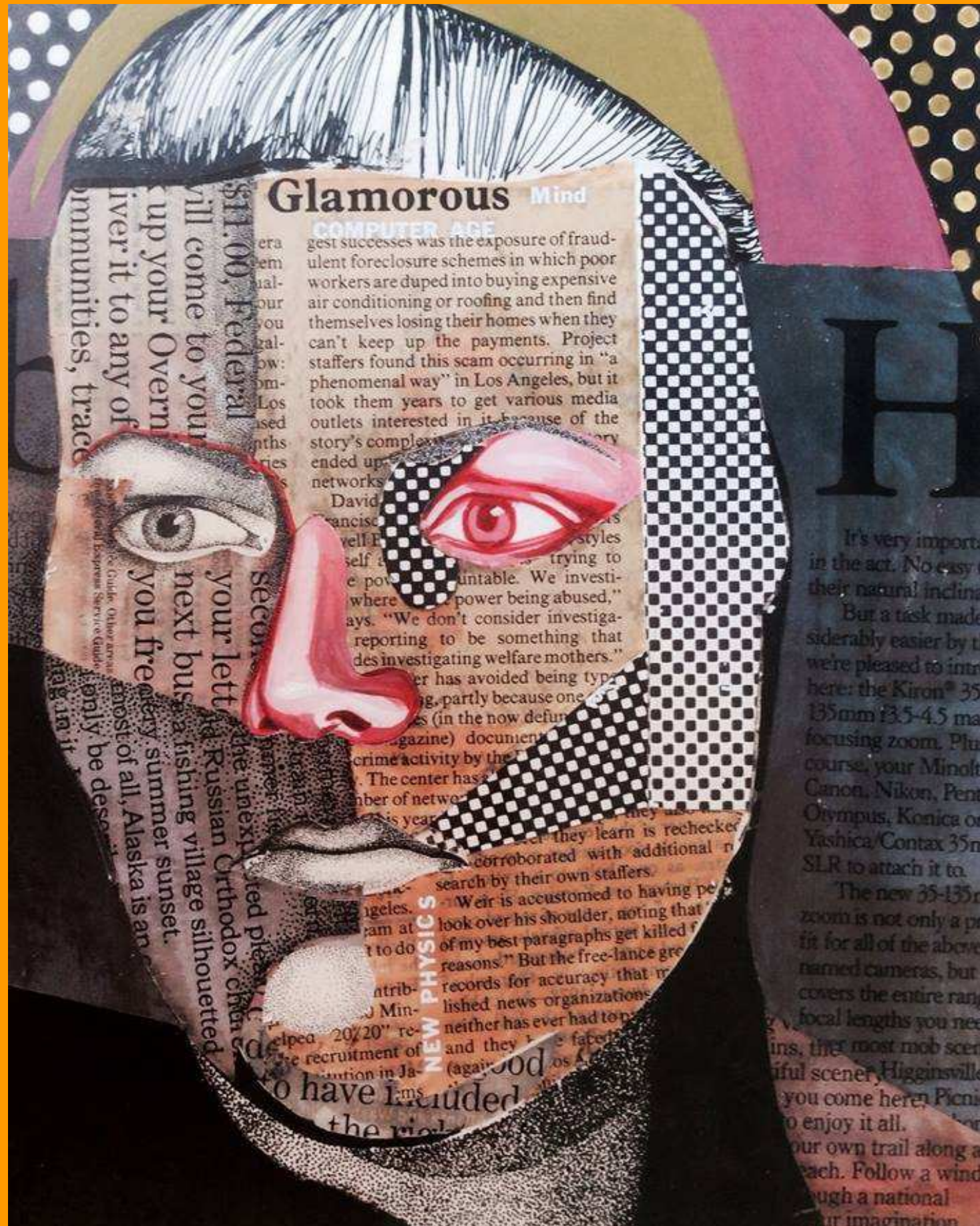


2003 Ceramic



c. 2011
Collage





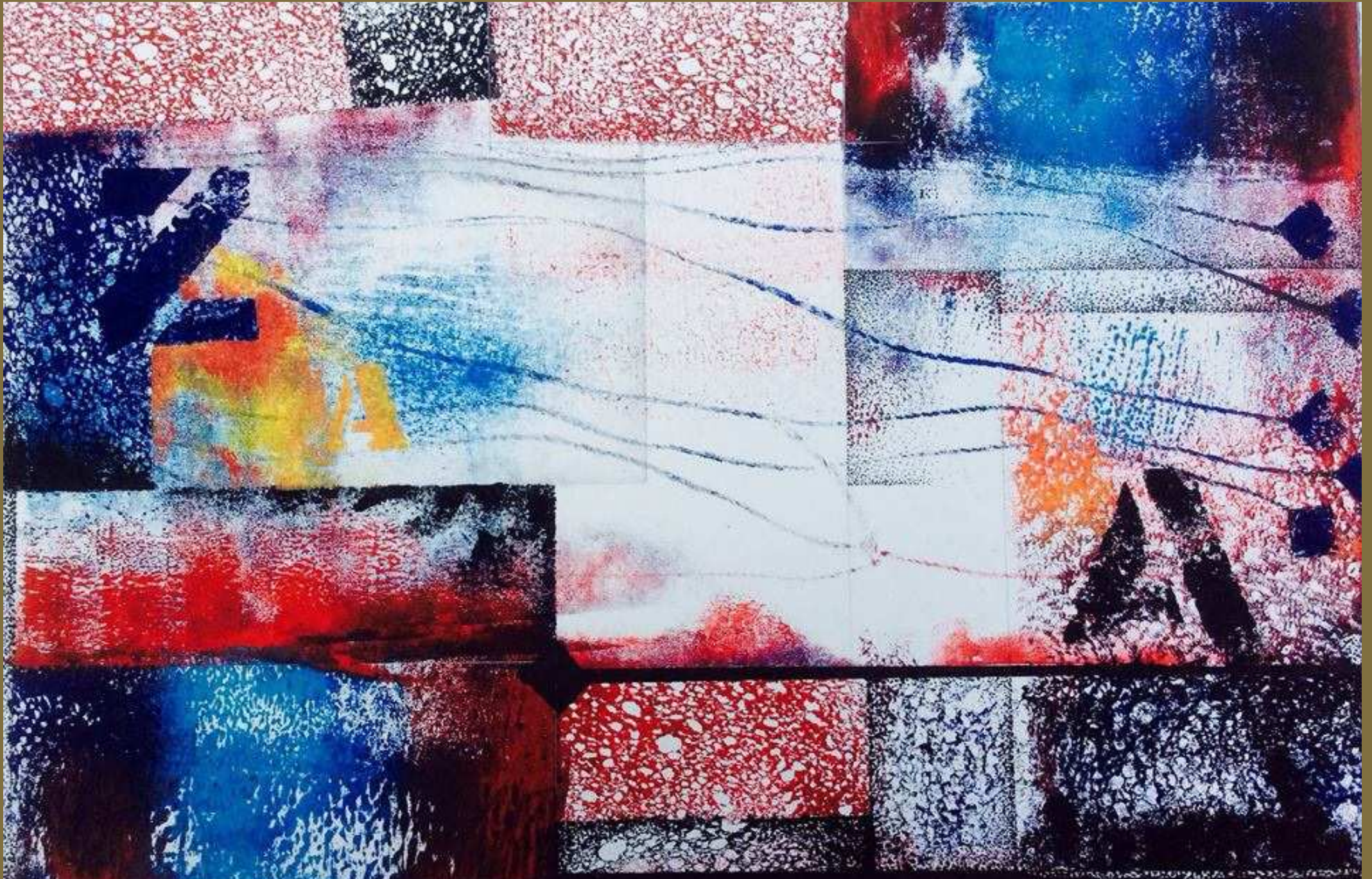
1977
Collage



c. 2013
Ink



c. 2013
Ink



1990 Mixed Media

**Fantasy Art by
Laura Gael Sweeney**

Representation, Fantasy, and Abstraction